

FOLD BOX

HIMO Waterproof Basket

User Manual

D E S I G N B Y

HIMO

Precautions for use

Safe guidelines for using the product

- Before installing the waterproof basket, please read this manual carefully.
- Please use within the scope of product attributes.
- The Waterproof Basket is not child friendly. Do not allow children to play with parts.
- When installing the basket, please install it according to the instructions.
- To avoid loss and damage, Please do not store valuables in the car basket when driving.
- Do not put the product in a strong acid and alkali environment, so as not to cause corrosion damage to the product and affect its use.

Specification

Basket diameter	240mm
Basket height	270mm
Capacity	12L
Deadweight	5kg
Basket circumference	780mm
Metal ring material	Iron
Basket material	Oxford Fabric
Waterproof level	IP53

Quick understanding of HIMO L150

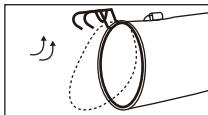
Main uses and features

HIMO waterproof storage car basket is a portable car basket that is flexible for the car, storage or can be hand-held. It has a simple and versatile appearance. It is often used with a variety of bicycles and electric vehicles to store items.

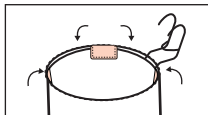
Maintenance

The zipper can be wiped with lubricant regularly to keep the zipper flexible. Avoid exposure to the sun as much as possible, which can slow down oxidation and corrosion and prolong the service life.

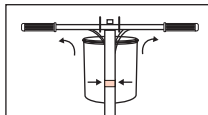
How to install



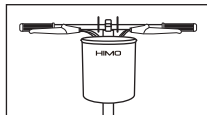
01. The hook sleeve enters the gap between the basket and the basket cover.



02. Adjust the iron ring to the proper position in the frame, and fix it tightly with the four-sided Velcro.

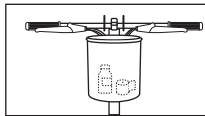
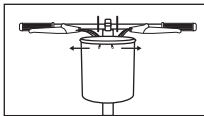


03. Hang the assembled car basket on the stem, stick the external velcro, and fix the car basket to the head tube.

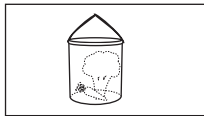
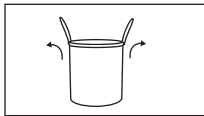


04. Adjust the angle, installation is complete.

Instructions



- Storage basket: 1. Fix the basket on the stem.
2. Open the zipper to both sides, put the carried items in the basket, and ride more easily.



- Storage carrying bag: Take out the carrying strap from the car basket, put the carried items in the car basket, and pull the zipper.